



Amarillo 1005



Amarillo 1020



Amarillo 1030



Amarillo 1035



Amarillo 1040



Amarillo 1045



Amarillo 1050



Amarillo 1130



Cuero 2000



Cuero 2005



Cuero 2010



Cuero 2025



Cuero 2045



Pardo 3000



Pardo 3002



Pardo 3004



Pardo 3006



Pardo 3008



Pardo 3010



Pardo 3012



Pardo 3014



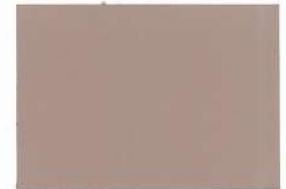
Pardo 3016



Pardo 3018



Pardo 3020



Pardo 3022



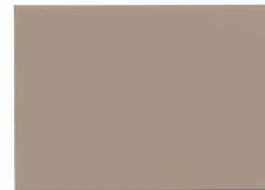
Pardo 3024



Pardo 3026



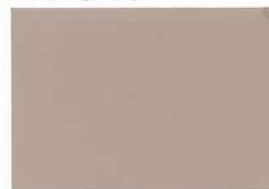
Pardo 3028



Pardo 3030



Pardo 3032



Pardo 3034



Pardo 3036



Pardo 3038



Pardo 3040



Pardo 3042



Pardo 3044



Pardo 3046



Pardo 3048



Pardo 3050



Pardo 3054



Pardo 3056



Pardo 3058



Pardo 3060



Pardo 3062



Pardo 3064



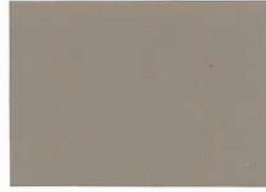
Pardo 3066



Pardo 3068



Pardo 3070



Pardo 3072



Pardo 3074



Pardo 3076



Pardo 3078



Pardo 3080



Pardo 3082



Pardo 3084



Pardo 3086



Pardo 3088



Pardo 3090



Pardo 3092



Pardo 3094



Pardo 3096



Pardo 3098



Pardo 3100



Pardo 3200



Pardo 3400



Pardo 3500



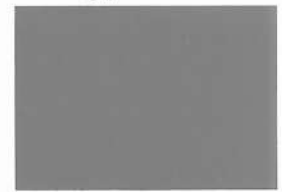
Pardo 3510



Pardo 3550



Pardo 3700



Negro 4010



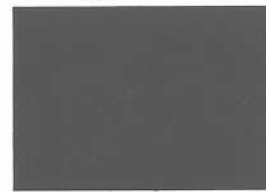
Negro 4015



Negro 4020



Negro 4025



Negro 4040



Verde 5010



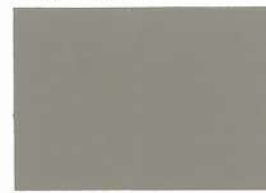
Verde 5015



Verde 5020



Verde 5030



Verde 5050



Verde 5060



Azul 6005



Azul 6010



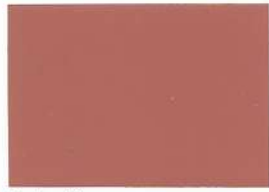
Azul 6030



Rojo 8000



Rojo 8005



Rojo 8010



Rojo 8015



Rojo 8020



Rojo 8025



Rojo 8035



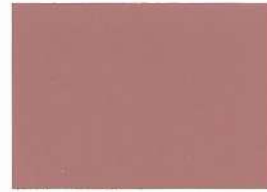
Rojo 8050



Rojo 8055



Rojo 8060



Rojo 8065



Rojo 8070



Rojo 8075



Rojo 8080



Rojo 8090



Rojo 8110



Rojo 8115



Naranja 9000



Naranja 9005



Naranja 9015



Naranja 9020



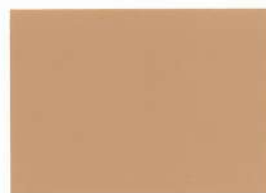
Naranja 9025E



Naranja 9040



Naranja 9045



Naranja 9055



Naranja 9075



Naranja 9110B

# Cemento GRIS

## Gray Cement

# MBC



## PIGMENTS

Especificaciones Técnicas	Referencia	Color	Contenido en Hierro	Residuos a 10 <sup>5</sup> s	Sales Solubles	Residuos finiza a 45µm	Absorción al aceite	pH	Densidad Aparente	Poder de Coloración	Tipo de la Partícula	Delta Diferencia de Color Vs Standard AE	
			ISO 1248	ISO 787/2	ISO 787/3	ISO 787/7	ISO 787/5	ISO 787/9	ISO 787/11	ISO 787/24	ISO 787/1		
Amarillos	1005	Amarillo	86%	1.00%	0.30%	0.30%	25-35	3-7	0.4-0.6	95-105%	ACICULAR	<1	
	1020	Amarillo	-	1.00%	0.30%	0.30%	25-35	3-7	0.6-1.0	95-105%	IRREGULAR	<1	
	1030	Amarillo	-	1.00%	0.30%	0.30%	25-35	3-7	0.6-1.0	95-105%	IRREGULAR	<1	
	1035	Amarillo	-	1.00%	0.30%	0.30%	25-35	3-7	0.6-1.0	95-105%	IRREGULAR	<1	
	1040	Amarillo	-	1.00%	0.30%	0.30%	25-35	3-7	0.6-1.0	95-105%	IRREGULAR	<1	
	1045	Amarillo	-	1.00%	0.30%	0.30%	25-35	3-7	0.6-1.0	95-105%	IRREGULAR	<1	
	1050	Amarillo	-	86%	1.00%	0.30%	0.30%	25-35	3-7	0.4-0.6	95-105%	ACICULAR	<1
	1052	Amarillo	-	86%	1.00%	0.50%	0.30%	20-25	5-7	0.4-0.6	95-105%	ESFERICA	<1
1130	Amarillo	-	-	1.00%	0.30%	0.30%	25-35	3-7	0.4-0.6	95-105%	IRREGULAR	<1	
Cuero	2000	Cuero	-	1.00%	0.30%	0.30%	20-25	3-7	0.6-1.0	95-105%	IRREGULAR	<1	
	2005	Cuero	-	1.00%	0.30%	0.30%	20-25	3-7	0.6-1.0	95-105%	IRREGULAR	<1	
	2010	Cuero	-	1.00%	0.30%	0.30%	20-25	3-7	0.6-1.0	95-105%	IRREGULAR	<1	
	2025	Cuero	-	1.00%	0.30%	0.30%	20-25	3-7	0.6-1.0	95-105%	IRREGULAR	<1	
	2045	Cuero	-	1.00%	0.30%	0.30%	20-25	3-7	0.6-1.0	95-105%	IRREGULAR	<1	
Pardo	3000	Pardo	-	1.00%	0.30%	0.30%	20-25	3-7	0.6-1.0	95-105%	IRREGULAR	<1	
	3010	Pardo	-	1.00%	0.30%	0.30%	20-25	3-7	0.6-1.0	95-105%	IRREGULAR	<1	
	3020	Pardo	-	1.00%	0.30%	0.30%	20-25	3-7	0.6-1.0	95-105%	IRREGULAR	<1	
	3030	Pardo	-	1.00%	0.30%	0.30%	20-25	3-7	0.6-1.0	95-105%	IRREGULAR	<1	
	3040	Pardo	-	1.00%	0.30%	0.30%	20-25	3-7	0.6-1.0	95-105%	IRREGULAR	<1	
	3050	Pardo	-	1.00%	0.30%	0.30%	20-25	3-7	0.6-1.0	95-105%	IRREGULAR	<1	
	3060	Pardo	-	1.00%	0.30%	0.30%	20-25	3-7	0.6-1.0	95-105%	IRREGULAR	<1	
	3064	Pardo	-	1.00%	0.30%	0.30%	20-25	3-7	0.6-1.0	95-105%	IRREGULAR	<1	
	3070	Pardo	-	1.00%	0.30%	0.30%	20-25	3-7	0.6-1.0	95-105%	IRREGULAR	<1	
	3080	Pardo	-	1.00%	0.30%	0.30%	20-25	3-7	0.6-1.0	95-105%	IRREGULAR	<1	
	3082	Pardo	-	1.00%	0.30%	0.30%	20-25	3-7	0.6-1.0	95-105%	IRREGULAR	<1	
	3084	Pardo	-	1.00%	0.30%	0.30%	20-25	3-7	0.6-1.0	95-105%	IRREGULAR	<1	
	3086	Pardo	-	1.00%	0.30%	0.30%	20-25	3-7	0.6-1.0	95-105%	IRREGULAR	<1	
	3088	Pardo	-	1.00%	0.30%	0.30%	20-25	3-7	0.6-1.0	95-105%	IRREGULAR	<1	
	3090	Pardo	-	1.00%	0.30%	0.30%	20-25	3-7	0.6-1.0	95-105%	IRREGULAR	<1	
3510	Pardo	-	1.00%	0.30%	0.30%	20-25	3-7	0.6-1.0	95-105%	IRREGULAR	<1		
3550	Pardo	-	1.00%	0.30%	0.30%	20-25	3-7	0.6-1.0	95-105%	IRREGULAR	<1		
3700	Pardo	-	1.00%	0.30%	0.30%	20-25	3-7	0.6-1.0	95-105%	IRREGULAR	<1		
Negro	4010	Negro	-	1.00%	0.50%	0.30%	15-25	5-8	0.8-1.2	95-105%	ESFERICA	<1	
	4015	Negro	90%	1.50%	0.50%	0.50%	15-25	5-8	0.8-1.2	95-105%	ESFERICA	<1	
	4020	Negro	-	1.00%	0.50%	0.30%	15-25	5-8	0.8-1.2	95-105%	ESFERICA	<1	
	4025	Negro	94%	1.00%	0.50%	0.30%	15-25	5-8	0.8-1.2	95-105%	ESFERICA	<1	
	4040	Negro	-	1.00%	0.50%	0.30%	15-25	5-8	0.8-1.2	95-105%	ESFERICA	<1	
	4045	Negro	-	94%	1.00%	0.50%	0.30%	15-25	5-8	0.8-1.2	95-105%	ESFERICA	<1
4050	Negro	-	94%	1.00%	0.50%	0.30%	15-25	5-8	0.8-1.2	95-105%	ESFERICA	<1	
Verde	5010	Oxido Cromo	-	1.00%	0.50%	0.30%	15-25	5-8	0.8-1.2	95-105%	ESFERICA	<1	
	5015	Oxido Cromo	-	1.00%	0.50%	0.30%	15-25	5-8	0.8-1.2	95-105%	ESFERICA	<1	
	5020	Oxido Cromo	-	1.00%	0.50%	0.30%	15-25	5-8	0.8-1.2	95-105%	ESFERICA	<1	
	5030	Oxido Cromo	-	1.00%	0.50%	0.30%	15-25	5-8	0.8-1.2	95-105%	ESFERICA	<1	
	5050	Verde	-	1.00%	0.50%	0.30%	15-25	5-8	0.8-1.2	95-105%	IRREGULAR	<1	
5060	Verde	-	1.00%	0.50%	0.30%	15-25	5-8	0.8-1.2	95-105%	IRREGULAR	<1		
Azul	6005	Azul Ofalociantr	-	1.00%	0.50%	0.30%	15-25	5-8	0.8-1.2	95-105%	ESFERICA	<1	
	6010	Azul Cobalto	-	1.00%	0.50%	0.30%	15-25	5-8	0.8-1.2	95-105%	ESFERICA	<1	
	6030	Azul Cobalto	-	1.00%	0.50%	0.30%	15-25	5-8	0.8-1.2	95-105%	ESFERICA	<1	
Rojo	8000	Rojo	-	1.00%	0.50%	0.30%	15-25	3-7	0.8-1.2	95-105%	ESFERICA	<1	
	8005	Rojo	-	1.00%	0.50%	0.30%	15-25	3-7	0.8-1.2	95-105%	ESFERICA	<1	
	8010	Rojo	-	1.00%	0.50%	0.30%	15-25	3-7	0.8-1.2	95-105%	ESFERICA	<1	
	8015	Rojo	-	1.00%	0.50%	0.30%	15-25	3-7	0.8-1.2	95-105%	ESFERICA	<1	
	8020	Rojo	-	1.00%	0.50%	0.30%	15-25	3-7	0.8-1.2	95-105%	ESFERICA	<1	
	8025	Rojo	-	1.00%	0.50%	0.30%	15-25	3-7	0.8-1.2	95-105%	ESFERICA	<1	
	8035	Rojo	-	1.00%	0.50%	0.30%	15-25	3-7	0.8-1.2	95-105%	ESFERICA	<1	
	8050	Rojo	-	1.00%	0.50%	0.30%	15-25	3-7	0.8-1.2	95-105%	ESFERICA	<1	
	8055	Rojo	-	1.00%	0.50%	0.30%	15-25	3-7	0.8-1.2	95-105%	ESFERICA	<1	
	8060	Rojo	-	1.00%	0.50%	0.30%	15-25	3-7	0.8-1.2	95-105%	ESFERICA	<1	
	8065	Rojo	-	1.00%	0.50%	0.30%	15-25	3-7	0.8-1.2	95-105%	ESFERICA	<1	
	8070	Rojo	-	1.00%	0.50%	0.30%	15-25	3-7	0.8-1.2	95-105%	ESFERICA	<1	
8110	Rojo	-	1.00%	0.50%	0.30%	15-25	3-7	0.8-1.2	95-105%	ESFERICA	<1		
8115	Rojo	-	1.00%	0.50%	0.30%	15-25	3-7	0.8-1.2	95-105%	ESFERICA	<1		
Naranja	9000	Naranja	-	1.00%	0.50%	0.30%	25-35	3-7	0.6-0.8	95-105%	IRREGULAR	<1	
	9005	Naranja	-	1.00%	0.50%	0.30%	25-35	3-7	0.6-0.8	95-105%	IRREGULAR	<1	
	9015	Naranja	-	1.00%	0.50%	0.30%	25-35	3-7	0.6-0.8	95-105%	IRREGULAR	<1	
	9020	Naranja	88%	1.00%	0.50%	0.30%	25-35	3-7	0.6-0.8	95-105%	IRREGULAR	<1	
	9025E	Naranja	-	1.00%	0.50%	0.30%	25-35	3-7	0.6-0.8	95-105%	IRREGULAR	<1	
	9040	Naranja	-	1.00%	0.50%	0.30%	25-35	3-7	0.6-0.8	95-105%	IRREGULAR	<1	
	9045	Naranja	88%	1.00%	0.50%	0.30%	25-35	3-7	0.6-0.8	95-105%	IRREGULAR	<1	
	9055	Naranja	88%	1.00%	0.50%	0.30%	25-35	3-7	0.6-0.8	95-105%	IRREGULAR	<1	
	9075	Naranja	-	1.00%	0.50%	0.30%	25-35	3-7	0.6-0.8	95-105%	IRREGULAR	<1	
	9110B	Naranja	-	1.00%	0.50%	0.30%	25-35	3-7	0.6-0.8	95-105%	IRREGULAR	<1	

Nuestros Productos van envasados en sacos de 20 y 25 kgs dependiendo del tipo de producto y su aplicación. Si el cliente necesitara otro tipo de packaging podría ser realizado.

Dpto Produccion

C/ Atocha 2  
44500 – Andorra, Teruel  
www.mbcpigments.com  
(+34) 689 10 91 78